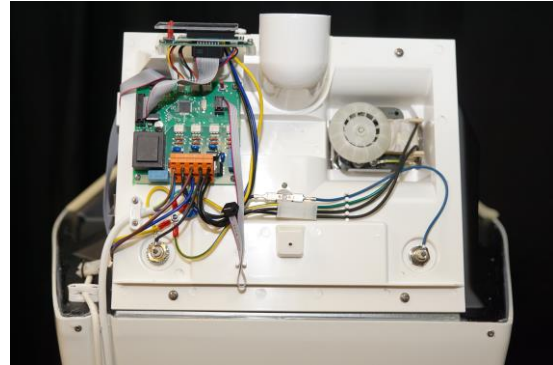


Replace Display

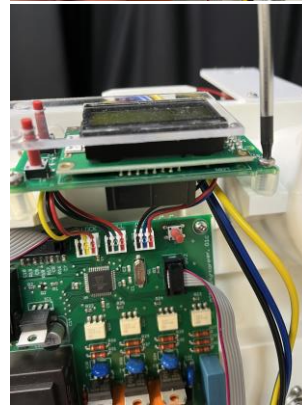
Remove the top part and turn the backside of the toilet towards you



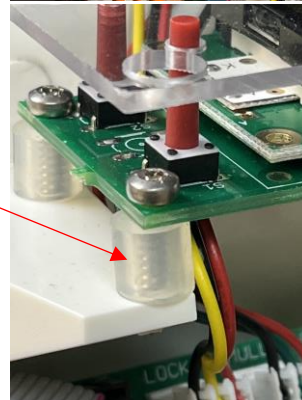
Remove the connection cable for the display



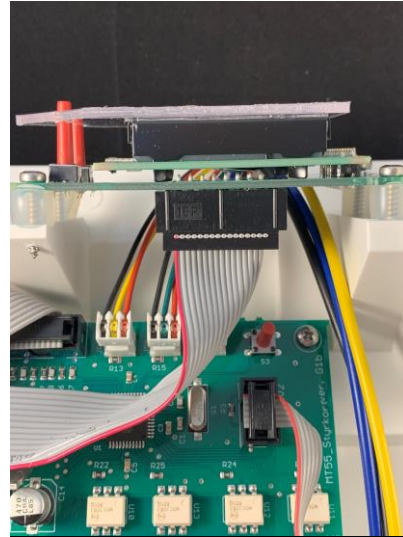
Remove the 4 screws holding the display pcb.
Tools required Torx screwdriver T10



Make sure to keep the 4 rubber distances in position when removing the display.



Mount the new display in reversed order.



Connect the toilet to the socket and check the display.



